

Latest Additions and updates.

Latest version (late April) now does an auto login on first session, so no need to login with g4l (G 4 L) on first tty. Other ttys will require login. (Ctrl-Alt F2, etc)

Addition of ./fg4l front end script – script acts as a helper front end by connecting to an ftp server to download a script with pre-loaded settings to help users with less experience. It only requires the ip address of the server with the script. This can be used without having to create new cd images or making modifications.

Modification for version 0.16 include further modifications to fg4l script to include a dialog script prompt if serverip left blank. Modified sample front script to use case statement and use of the userid:password option in addition to the -u userid –p password option.

```
./fg4l serverip
```

## **FG4L SCRIPT.**

```
#!/bin/sh
```

```
#
```

```
#
```

```
## Michael Setzer II - Program Modifications
```

```
: ${DIALOG=dialog}
```

```
: ${DIALOG_OK=0}
```

```
: ${DIALOG_CANCEL=1}
```

```
: ${DIALOG_ESC=255}
```

```
ftpipaddress=$1
```

```
if [ -z $ftpipaddress ]; then
```

```
    $DIALOG --backtitle "Front-End Script to download options from FTP Server" \  
        --title "IP Address" --clear \  
        --inputbox "Provide IP address of FTP server\  
                    \nwith front script\  
                    \nExample: 192.168.0.5 \  
                    \n\nEnter IP Address:" 0 0 2> /tmp/getip
```

```
retvalip=$?
```

```
case $retval in
    $DIALOG_OK)
        ftpipaddress=`cat /tmp/getip`
esac
fi

device=eth0
ipaddress=`udhcpc -i $device -s/udhcpc.sh|grep Lease|cut -d\ -f4`
/sbin/ifconfig $device $ipaddress up
ncftpget $ftpipaddress . front
chmod 755 front
./front
```

Script uses eth0, gets the IP address from dhcp, activates eth0, downloads the script from the server (must be named front), makes the script executable, runs script.

## FRONT SCRIPT SAMPLE.

```
#!/bin/sh
#
#
## Michael Setzer II - Program Modifications
## Set tab = 2 spaces for formatting
: ${DIALOG=dialog}
: ${DIALOG_OK=0}
: ${DIALOG_CANCEL=1}
: ${DIALOG_ESC=255}

# window title
backtitle="g4l frontend menu"

# two options for menu format
# in the first one, the option letter followed by colon and space
# then serverip image.ext
# using the user:password format you can also include it and the dhcp option
# serverip image.ext user:password dhcp

# in the second option, the only requirement would be the first letters linked
# to the options, since all the parameters are set in the case statement

    $DIALOG --backtitle "$backtitle" \
        --title "G4L frontend menu" \
        --menu "Choose your desired mode:" 0 0 0 \
            "A: 192.168.0.1 image1.lzo" "The Big Image" \
            "B: 192.168.0.1 image2.gz " "The Small Image" \
            "C: 192.168.0.2 image3.gz " "The Medium Image" \
            "D: 192.168.0.7 image4.lzo" "The Multi Image" 2> /tmp/frontout
retvalmain=$?

# first option command options

#         ./g4l `cat /tmp/frontout | cut -b 3-80` '-u user -p password' dhcp
#or
#         ./g4l `cat /tmp/frontout | cut -b 3-80` user:password dhcp
```

```

# second option can feed any combination of options
# serverip
# serverip image.ext
# serverip image.ext user:password
# serverip image.ext user:password dhcp

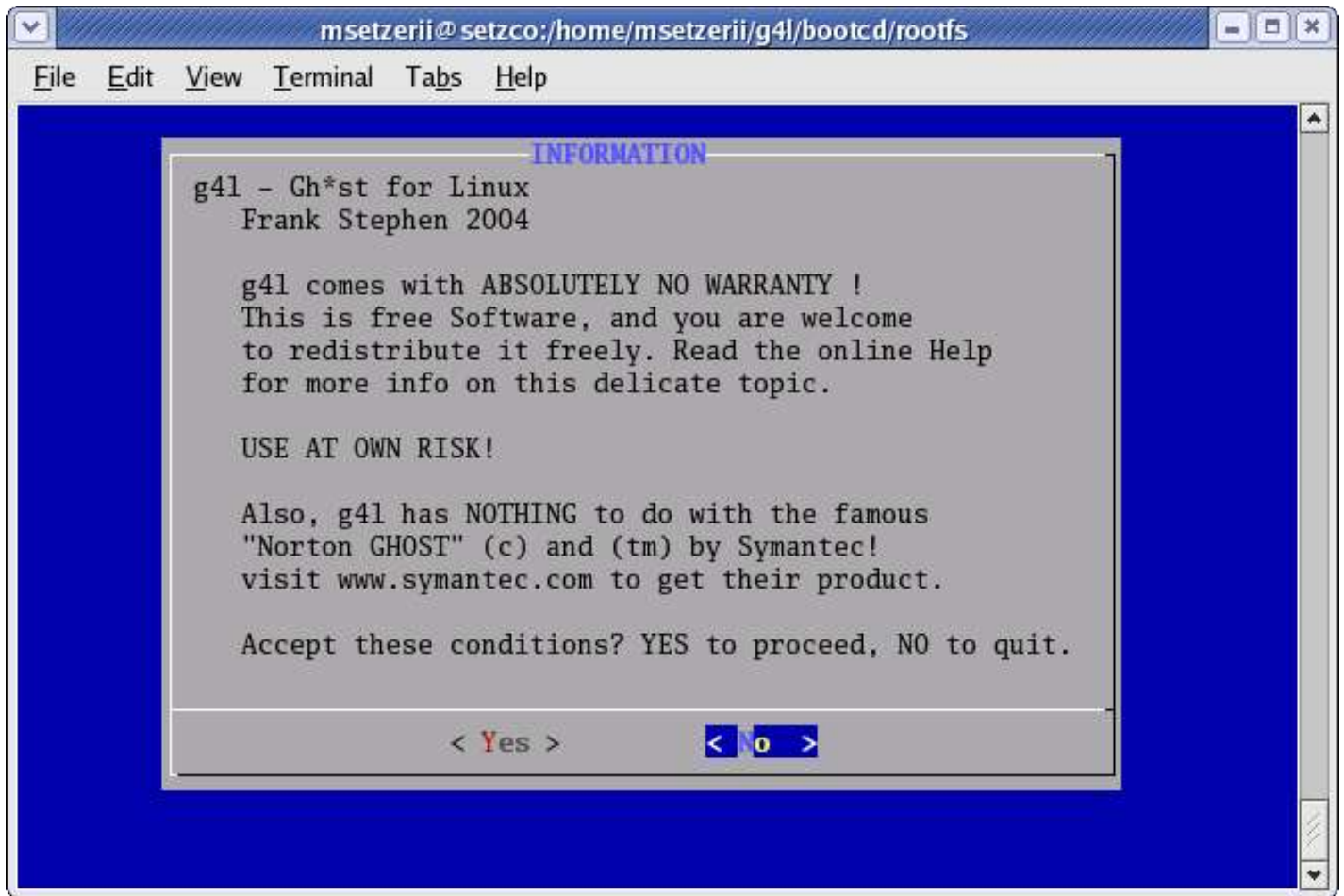
option=`cat /tmp/frontout | cut -b 1-1`
  case $option in
    "A")
      echo "A"
#      ./g4l 192.168.0.1 image1.lzo user:password dhcp
      ;;
    "B")
      echo "B"
#      ./g4l 192.168.0.1 image1.lzo user:password dhcp
      ;;
    "C")
      echo "C"
#      ./g4l 192.168.0.1 image1.lzo user:password dhcp
      ;;
    "D")
      echo "D"
#      ./g4l 192.168.0.1 image1.lzo user:password dhcp
      ;;
  esac
echo "DONE"

```

---

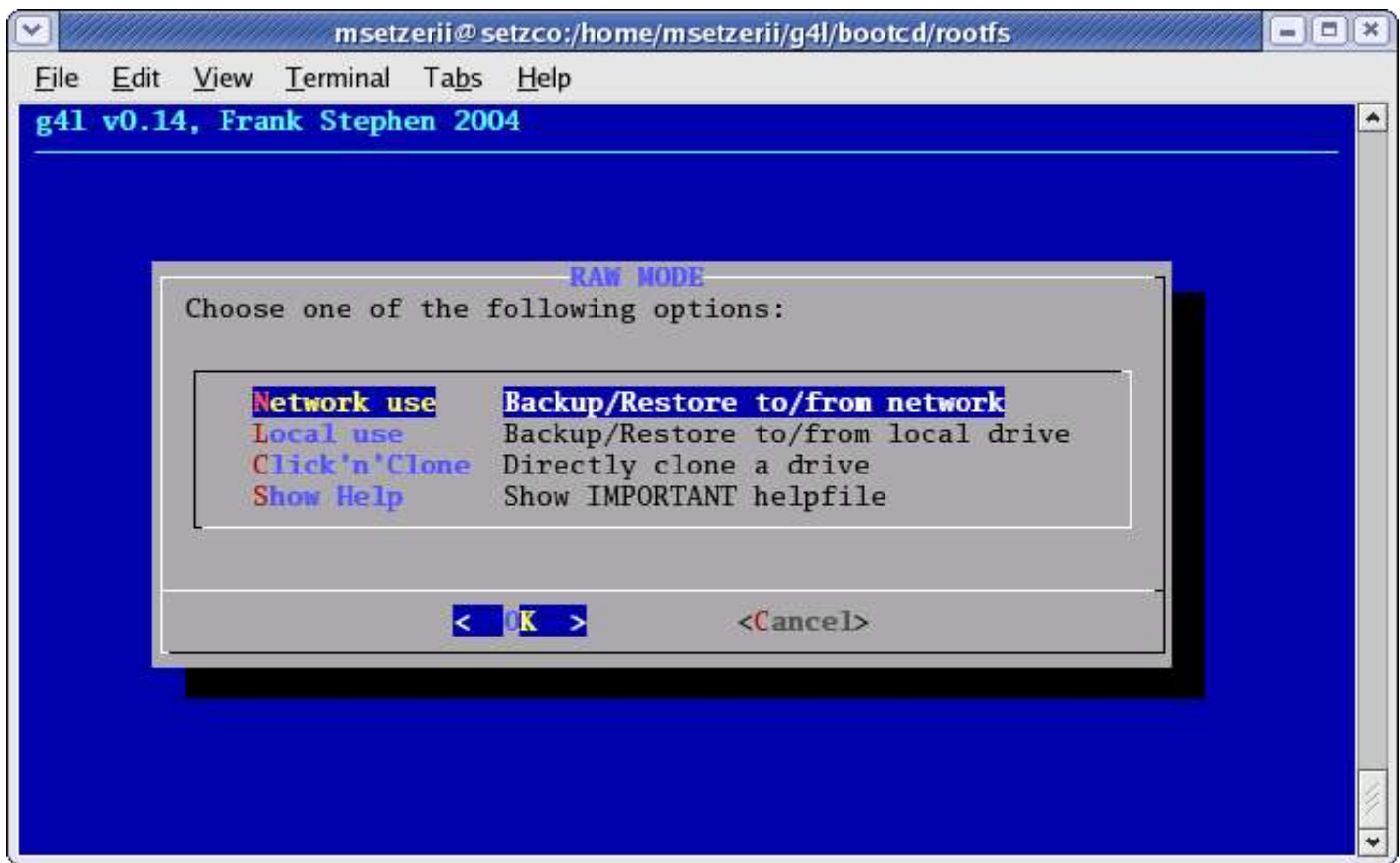
The above script is placed on the server with the example lines A: - D: being modified with the ipaddress and image names in the first section, and the description in the second section. More options can be added. The final line would need to be modified with the correct userid and password. This is setup with only 1 user id and password, but it could be modified to support multiple ones.

## Short Documentation on G4L modifications I've made.

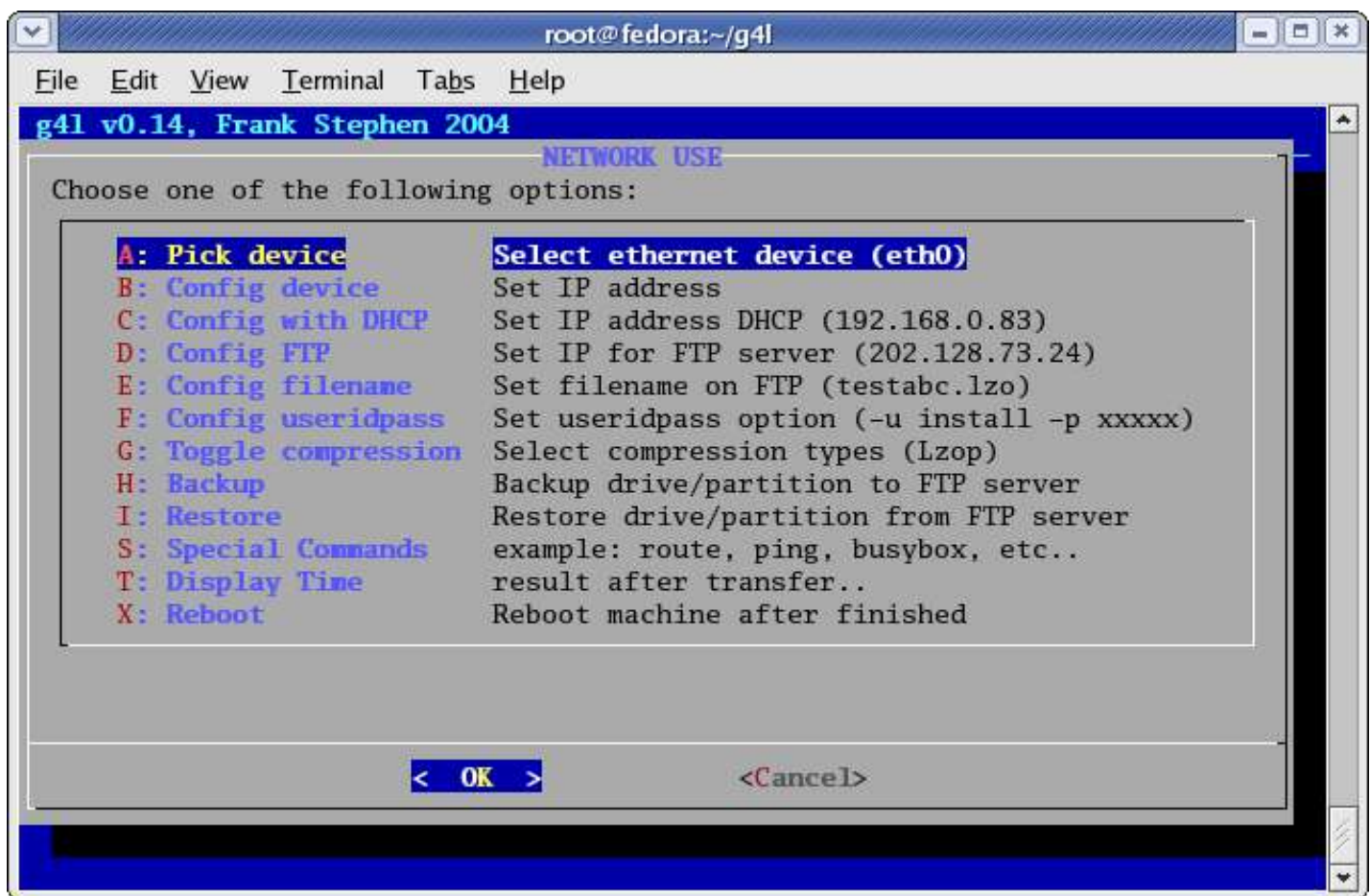


## Select Yes and then Raw Mode on Next screen





Select Network Use



First Added letters to each options, so selection can be done by using letters instead of just using arrow keys.

Option B: is the same as original (manual setting of IP)

Option C: is new, it gets IP address and other info from dhcp server

The () will contain the IP address information once set.

Option D: is the same, setting the IP address of ftp server

The () will contain the ftp servers ip once set.

Option E: is the same, setting the filename of image

The () will contain the filename once set

Option F: added option to set a user id and password. If blank, it will still use anonymous. Entered in the format of -u user -p password

The () will contain the user and password information

Option G: is the same, but it defaults to Gzip

The () contains the compression type

Option H: Creates the Image as before

Option I: Does the restore as before

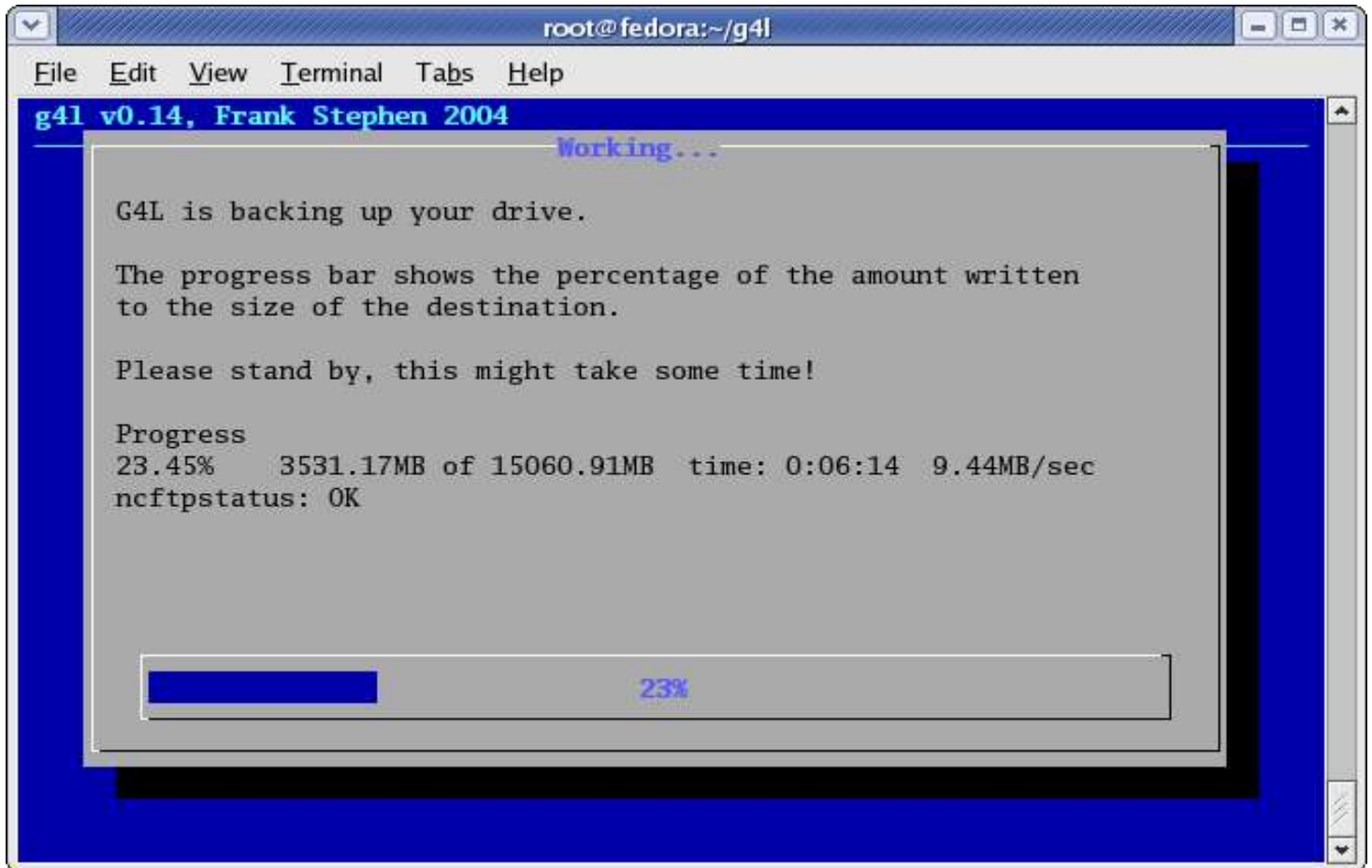
Option S: Is added, and allows for running any commands

The user enters any command that the linux or busybox supports and the command is run, followed by a 10 second sleep.

Option T: Show time results of the last process.

Option V: Added to allow changing image subdirectory.

Option X: Runs the Reboot command



This is an example of my modification of the progress screen. It shows the percentage with 2 decimal places and shows the data transferred so far and the total size, elapse time of process and the current speed of the process.

The script for this is available at <ftp://fedoragcc.dyndns.org> as g4lup21tst

An ISO image with the update is available at <ftp://fedoragcc.dyndns.org> as g4l-v0.15.iso

**Note: the files will change with additional updates.**



Additional pdf file that shows the modifications between jetcat and jetcat-mod.

```
root@fedora:~/g4l
File Edit View Terminal Tabs Help
g4l v0.14, Frank Stephen 2004
TIME RESULTS
99.60%      15000.00MB of 15060.91MB      time: 0:17:12  14.53MB/sec
99.75%      15023.80MB of 15060.91MB      time: 0:17:13  14.54MB/sec
99.91%      15048.00MB of 15060.91MB      time: 0:17:14  14.55MB/sec
100.00%     15060.91MB of 15060.91MB      time: 0:17:14  14.57MB/sec
100
(100%)
< EXIT >
```

Option T: Output shows the last results of the backup or restore.

Busybox was also rebuild adding the udhcpd for the dhcpd to work.